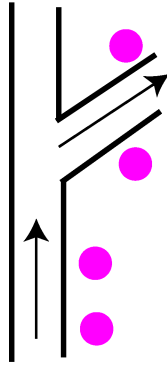
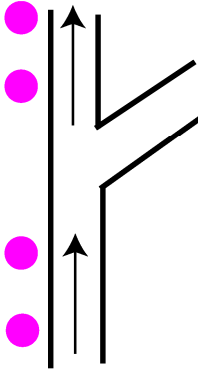


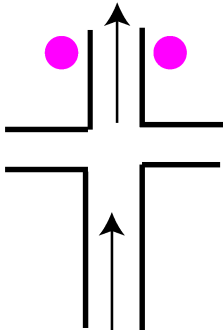
Stevens Creek 50K Ribboning Scheme



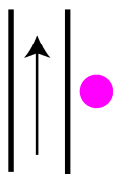
#1) Ribbons before a turn signal a turn coming up in that direction; ribbons after the turn confirm a correct turn was made



#2) Ribbons before a turn you do NOT take are on the opposite side of the trail; ribbons after the non-turn confirm you were correct to go straight



#3) If there is an intersection that you cross, there will be NO ribbons before the intersection (meaning, no turn), and ribbons on one or both sides AFTER the intersection to show you were correct to go straight. If there is an intersection where you DO turn, see scheme #1 above.



#4) "Confidence ribbons" are ribbons placed where there is NOT a possible turn. There will be a moderate number of these, but if you pay attention at turns, they should be entirely superfluous. Do NOT be alarmed if you spend a long time without seeing one. DO be alarmed if you arrive at a possible turn and there are no ribbons in sight to tell you what to do.

General rule #1: Never make a turn if a ribbon doesn't tell you to.

General rule #2: If you are confused, or it appears that a ribbon has been removed and you're not sure which way to go, WAIT for someone who does!

Color Scheme:

Follow **YELLOW** ribbons from start heading Southeast to Mile 11 Aid/Turnaround

Follow **PINK** ribbons from there heading Northwest through the Mile 20 Aid all the way to Mile 25 Aid/Turnaround

Follow **YELLOW** ribbons from there heading Southeast back to the finish